

WHAT'S NEW IN WESTERN LIVING

Sunset

NOVEMBER 1936 - 10 CENTS



VIEW-DRAPERIES DRAPE VIEWS. Lanette Scheeline of Berkeley, artist and textile-designer, designs draperies patterned to echo your view. The above hand-printed linen, available in other colors too, she patterned after the San Francisco-Oakland Bay Bridge, and she painted the view of the Bridge which makes this staged photograph look like a room on San Francisco's Nob Hill.

DE 197956
RAYMOND TORREY
842 E 12TH ST
EUGENE ORE
SEP 39R

FOR THE *Woman's Home*
Companion MYSTERY HOUSE

THE BROADWAY DEPARTMENT

STORE OF LOS ANGELES CHOSE



SHERWIN-WILLIAMS
Flat-Tone

THE WASHABLE FLAT WALL PAINT

The Broadway Department Store of Los Angeles, chose S-W Flat-Tone for its soft and glowing, fast to light colors . . . for the ease with which it can be applied . . . for its color fastness, and because it won't rub off. And also because its economy is amazing. For living room, dining room, bedroom; for walls and woodwork, for Main Street and Metropolis, use Sherwin-Williams Flat-Tone.



FREE

FREE

40 pages in color! The famous Sherwin-Williams Home Decorator. "Paint Headquarters" the Sherwin-Williams Dealer in your locality, will gladly give you your copy. Or write directly to The Sherwin-Williams Co., Dept. K-15, Cleveland, Ohio.



SHERWIN-WILLIAMS
PAINTS

"All you need to know about PAINT"



OFF THE PAVEMENTS

Hunting Wild Boars

Chasing down the wild wild boar is a pursuit that can be and is followed right here in the West. Captain Sandy Sanborn knows. He's a Santa Barbara charter-boat skipper, and an old hand at boar-hunting, the sport of the daring Bengal Lancers.

Santa Cruz Island, off the Santa Barbara coast, is the place. Fall, winter, and early spring is the time. Before October 1 the boars are likely to be in warm-weather hiding; after May 1 hunters are likely to be a fire hazard on the fire-protectionless island. During the 7 months in between, the acorns, the boars' favorite food, are on the ground, and the boar's meat is at its toothsome best.

Justinian Caire, who in 1880 founded the ranch on the island, says that the boars were there when he came, and that he's seen pictures showing they were there about 20 years before. Local legend credits their origin to the days of Mexican rule, when Santa Cruz Island was a prison. A load of prisoners is said to have been left there with a supply of cattle and hogs, but no guards. The prisoners killed the cattle, cured the hides, made rafts of inflated hides, and hid themselves to the mainland, leaving the hogs to go hog-wild.

"The island boar of today," says Captain Sanborn, "is equipped with heavy powerful forequarters, a tough hide or armor on the shoulders, narrow hind-quarters, a sloping forehead, an elongated snout, 4 formidable tusks, and a thoroughly unreliable disposition." Some of these porcines tip the scales close to 350 pounds, and for a long time Captain Sandy has had his eye on one old boar warrior who will probably top 500.

Those who prefer may get horses at the Caire ranch, but Captain Sanborn says most boar hunters like to work on foot. The same careful tactics are used as in deer hunting. The hunter must have a sharp eye. Above all, there must be utmost quiet. Careless gunshots or shouts will echo far and away up the canyons, and the boar, being neither deaf nor a fool, will hide in the brush till the hunters have passed, and then sneak out, villainously unscathed.

Because boars keep to cover in the heat of the day, early morning and early evening usually give the best hunting. Generally cool damp weather is best, as the boars come out to enjoy it. Although going a-hunting in the rain may not be exactly charming, Captain Sanborn says wet weather has been the death of many a boar—via powder, not pneumonia.

It doesn't take an elephant gun to bring down a boar, but if you tried to stop him with a .22 you might be wishing for more bore and less boar. A .30-.30 is about right. In addition, a revolver isn't much extra load, and though



You never need to be embarrassed by stains and spots in a toilet bowl. You never need to rub and scrub to keep it glistening like new! Just get a can of Sani-Flush. Sprinkle a little of this odorless powder in the bowl. (Follow directions printed on the can.) When you flush the toilet, unsightliness is carried away. The porcelain glitters again. Odors and germs are killed.

Sani-Flush is especially made to clean toilets. It does a better job. It saves all unpleasant toiling with toilets. It cannot injure plumbing. Sani-Flush is also effective for cleaning automobile radiators (directions on can). Sold by grocery, drug, hardware, and five-and-ten-cent stores—25 and 10 cent sizes. The Hygienic Products Co., Canton, Ohio.



He Needs GLOVER'S MANGE MEDICINE

Mange in dogs is a serious skin disease and calls for immediate use of GLOVER'S MANGE MEDICINE. It relieves the itching and irritation; kills the mange mites causing Sarcopic Mange; checks spread of the disease; stimulates hair growth on bare patches. Also destroys ticks and chiggers. Insist on GLOVER'S.



GLOVER'S WORM MEDICINES are safe and sure. Standard for over 60 years. In capsules and liquid form for Round Worms and in capsules for Tapeworms and Hookworms. Sold everywhere.

GLOVER'S VETERINARY WELFARE SERVICE FREE! Our Veterinarian will gladly advise you on any animal problem. Mention animal's age and sex.

GLOVER'S GUIDE FREE. Contains reference chart of ailments and symptoms; treatment of dog diseases; preventive measures; care, training, feeding, etc. Ask your dealer for a copy or write to

GLOVER'S
Dept. 40, 462 Fourth Avenue, New York City

you might never use it, it *could* come in mighty handy for close-quarters work in a pinch.

Hunters should be equipped with high boots, heavy wrap for the channel crossing, jacket for wear on the island, and canteen. Santa Cruz Island has good camp sites with wood and water aplenty. If you don't care to make your own camp, you can rent a cot in one of the ranch buildings, and also cooking utensils. Either way, you bring your own blankets and food.

A typical 2-day trip will cost a party of 10 hunters \$5 per man, exclusive of the individual hunting permits (\$2 each). Horses come extra. All the details from Captain Sandy Sanborn, 925 W. Victoria, Santa Barbara, Calif.

Duck Hunting News



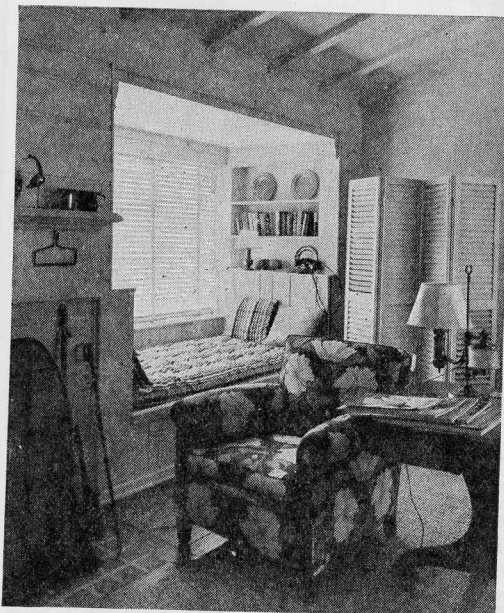
The first crack of daylight, November first, will see Pacific Coast nimrods at their posts for the duck season opening. In all the states wholly or partially west of the Continental Divide (Montana excepted) shooting will this year be allowed from November 1 through 30, from 7 a.m. to 4 p.m. daily. Shooting canvasback and redhead ducks and Atlantic brant will be taboo, however. This year again, no baiting, live decoys, sink boxes, or batteries will be allowed, and the 3-shell limit on repeaters still holds good. Daily bag and possession limits on ducks are again 10.

Why are the yearly duck regulations never disclosed till shortly before the season opens? Because each year they're formulated anew on the basis of the Biological Survey's recommendations, which are based on studies necessarily made late in the year.

Twenty years ago it became apparent that the nomads of the bird family had to have protection on a continental scale. State protection was inadequate for birds that fly all over the map in the course of a year. In August, 1916, the U. S. signed the Migratory Bird Treaty with Great Britain. (Canada has by far the major portion of all North American breeding grounds.) On the authority of the Treaty, in 1918 Congress enacted, and President Wilson signed, the Migratory Bird Treaty Act, sustained by the Supreme Court in 1920. The Act makes it illegal to kill any migratory bird at any time except as permitted by the current regulations. Before the regulations go into effect they must be O.K.'d by the Secretary of Agriculture and the President.

The survival of plenty of ducks depends chiefly on 2 factors. One is an abundance of marshes and bodies of water for breeding grounds, feeding grounds, and loafing grounds. This summer, drought touched many of these places and turned them to dust. The Biological Survey worked like fury establishing refuges in the northern plains. The United States' system of refuges, now totaling 2,100,000 acres, saved many ducks and ducklings, many of whom owed their salvation to rescue squads of game wardens and sportsmen who actually transported them to the water. Still, drought took its toll, and ducks died in the

The Cheerful Friendliness of the WESTERN PINES

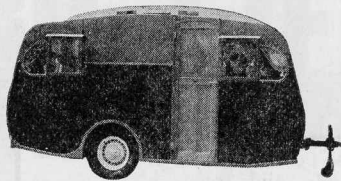


...is clearly evidenced in this charming study-room of a Palm Springs home. Here all the woodwork is of this fine, soft-textured lumber painted white, and rubbed off the knots. Then waxed to a beautiful finish. The screen is also of Pine. Write today for our interesting free booklet, "Western Pine Camera Views." Western Pine Association, Dept. K-3, Yeon Bldg., Portland, Oregon

WESTERN PINES

Idaho White Pine • Ponderosa Pine • Sugar Pine

"TRAVEL THE GYPSY WAY"



THE GYPSY CARAVAN

Trailers of QUALITY

BEAUTY : COMFORT : DEPENDABILITY

Send for Catalog

GYPSY CARAVAN CO.
3705 GAGE AVE. Dept. S BELL, CALIF.

SAVE UP TO 50% at Factory Prices!

16-TUBE
MIDWEST
5-BAND RADIO

\$49.95
COMPLETE
with
CIRCUIT
THERMO-
SONIC
SPARKER



30 Days
FREE Trial!

SAVE 50% by ordering this bigger, better, more powerful, super-selective, "Air-Tested" 16-tube, 5-band radio... direct from factory. 74 advanced features include Dial-A-Matic Tuning and Elektrik-Saver! Secures American, Canadian, police, amateur, airplane, ship broadcasts... and finest foreign programs. Money-back guarantee. 30 days FREE home trial! Write today for FREE 48-page 1937 catalog.

MIDWEST RADIO CORPORATION
Dept. E-321 Cincinnati, Ohio (Special offer applies only to mail orders.)

SUPERIOR Fireplace heat circulator UNIT



For New or Remodeled Fireplaces

Demonstrating Superior Heat Circulator Fireplace. Arrows show warm air flowing from Heat Circulator (around which fireplace is built) to all corners of the room and into adjoining rooms, returning along the floor to the air intake, completing the circulation, and producing uniform temperature. Write for information.

Manufacturers

SUPERIOR FIREPLACE COMPANY
1046 S. Olive Street
Los Angeles, Calif.